

KI A

Te Whānau o Wairewa
me Te Taumutu

NĀ

Linda and the Tāwhaki team

TE RĀ

Ko te rua tekau o Paenga-
whā whā
(20 April 2023)

TE KAUPAPA

Riaka Te Aka Matua and
whānau hui

Kia ora e te whānau,

We hope this finds you all well as we head into the winter months. This year is flying by and there has been plenty of mahi keeping us busy.

This month, we have three exciting kaupapa to share with you:

1. **Riaka Te Aka Matua** is a joint Wairewa Rūnanga and Te Taumatu Rūnanga rōpū that will stretch and test Tāwhaki ideas and opportunities. **Applications are now open until Sunday 21 May 2023.**
2. **Whānau hui** – we will have two dates in May for whānau to join us for an update on what's happening and coming up. **RSVP for 11 or 17 May.**
3. **Exclusive whānau-only event** – watch out for more details on a special chance to see behind-the-scenes of one of our local Ōtautahi aerospace innovators – Dawn Aerospace. **Save the date, Friday 12 May.**



Riaka Te Aka Matua

At the Aerospace Demonstration Day that we held at Kaitorete in September, we talked with whānau about the idea of forming a joint Wairewa and Te Taumutu rōpū to **support Tāwhaki with the stretching and testing of ideas and opportunities**. This was well received by whānau and has now progressed to the establishment phase.

The establishment of the rōpū **Riaka Te Aka Matua** and its Terms of Reference have been approved and we now seek applications from whānau.

Key points:

- The rōpū will meet on a regular basis (likely every second month) to kōrero kanohi-ki-te-kanohi focusing on the stretching and testing of ideas and opportunities

- We are seeking six members – three from Wairewa and three from Te Taumutu
- The roles are part-time paid positions
- The mahi that this rōpū undertakes will not replace the engagement and hui that Tāwhaki will have with the wider whānau.

Collective experience of the rōpū:

We are wanting the combined experience of the rōpū to cover the following areas:

- a) Ability to work across cultural, environmental, social, and commercial domains
- b) Knowledge of Rūnanga tikanga and kawa
- c) Knowledge of the Kaitorete landscape
- d) Interest in advancing the dual kaupapa of Tāwhaki

Terms of Reference:

Please see the attached Terms of Reference, which outline the role of the rōpū in more detail. We will also have a copy of the Terms of Reference on our website.

How do I apply?

Applications can be made through your Rūnanga office. Alternatively, you can send your application directly to Tāwhaki :

- Wairewa Rūnanga – wairewa@ngaitahu.iwi.nz
- Te Taumutu Rūnanga – taumutu@ngaitahu.iwi.nz
- Tāwhaki info@tawhaki.co.nz

In your application, please include your **reason for applying**, as well as your background/ experience. Tāwhaki will work alongside Rūnanga offices to compile the applications to go before the appointments panel.

Appointments panel

The Chairs of both Rūnanga and the Tāwhaki Rūnanga Board Members will review the applications and make the appointments. The panel members are:

- Jaleesa Panirau, Wairewa Rūnanga Chair
- Liz Brown, Te Taumutu Rūnanga Chair
- Henrietta Carroll, Tāwhaki Chair
- James Morrison, Tāwhaki Board Member
- Megen McKay, Tāwhaki Board Member
- David Perenara-O'Connell, Tāwhaki Board Member

Applications close Sunday 21 May 2023

We look forward to hearing from whānau. Please reach out to us at info@tawhaki.co.nz or come along to one of our whānau hui (see dates below) if you have any pātai.



Whānau hui – May 2023

Nau mai, haere mai!

We invite all whānau to join us for a hui we are holding in May.

These hui are an opportunity for whānau to catch up on the latest Tāwhaki updates and any Riaka Te Aka Matua pātai over kai and a kōrero.

We also have some rīwai (potatoes) that have been grown out on Kaitorete whenua for attendees to take home.



The hui will be hosted by our Tāwhaki Rūnanga Board Members, Henrietta Carroll, Megan McKay, David Perenara-O'Connell, and James Morrison.

Dates: Thursday 11 May and Wednesday 17 May

Time: 4.30pm to 6pm

Place: Tāwhaki HQ, Unit 5, 1 Waterman Place, Ferrymead, Ōtautahi

RSVP: Inu and kai will be provided, so please confirm your attendance for catering purposes, by Sunday 7 May to info@tawhaki.co.nz

We look forward to seeing you there!

Exclusive whānau only event!

Keep an eye out next week for an invite to an exclusive Wairewa and Te Taumutu whānau only event.

You'll get a rare, behind-the-scenes look at some of the aerospace technologies being developed right here in Ōtautahi – you'll get to kōrero with the team who make the tech and hear about their green, sustainable, and reusable kaupapa.

Not many people get the chance to see what the Dawn Aerospace team are developing up close – so come along – there will be plenty of kai, prizes, and fun activities for tamariki, rangatahi and the wider whānau.

Save the date: Friday 12 May 2023, 4.30pm – keep an eye on your emails and the Tāwhaki Facebook – more details will follow soon!

Noho ora mai rā i roto i ngā manaakitanga katoa.

Ngā mihi nui Linda and the Tāwhaki team.



TERMS OF REFERENCE

Rōpū	Riaka Te Aka Matua	Date	28 March 2023
Location	Ōtautahi, Aotearoa		

1. TE WHĀINGA (PURPOSE)

- 1.1. The purpose of the rōpū o Riaka Te Aka Matua (**the Rōpū**) is to support the moemoeā (vision) and dual kaupapa of the Tāwhaki Joint Venture (**Tāwhaki**).
- 1.2. The Rōpū will operate as a reference group for Tāwhaki. It enables kōrero kanohi-ki-te-kanohi on a regular basis to stretch and test ideas and thinking. It does not replace direct engagement between Tāwhaki, Wairewa Rūnanga, and Te Taumutu Rūnanga (the Rūnanga).
- 1.3. The name of the Rōpū is an analogy for the role – to stretch and test ideas for the strongest vine. The Rōpū enables Tāwhaki to test strategic ideas with a group of whānau, before canvassing with the wider whānau of the Rūnanga.
- 1.4. Together, members of the Rōpū will:
 - a) Participate in strategic assessments using the Tāwhaki Evaluation Tool to test options and opportunities presented to or arising from Tāwhaki, and ensure these are assessed in a structured, robust, and careful manner.
 - b) Provide strategic guidance to Tāwhaki on Kaitorete mātauranga, engagement opportunities, whānau aspirations, future ideas, and other matters of importance to whānau.
- 1.5. Members of the Rōpū are not responsible for:
 - a) Decision-making on options or opportunities presented to or arising from Tāwhaki.

2. ESTABLISHMENT, APPOINTMENTS, AND MEMBERSHIP

- 2.1. The combined experience of the Rōpū will collectively cover the following areas:
 - a) Ability to work across cultural, environmental, social, and commercial domains
 - b) Knowledge of the Rūnanga tikanga and kawa
 - c) Knowledge of the Kaitorete landscape
 - d) Interest in advancing the dual kaupapa of Tāwhaki
- 2.2. The membership will consist of:
 - a) Six members in total, which includes
 - 3 from Wairewa Rūnanga and 3 from Te Taumutu Rūnanga.
 - b) Additional membership may be considered by approval of Tāwhaki if required
- 2.3. The Rōpū will be established as follows:
 - a) Expressions of interest will be sought from whānau through the office of the Rūnanga.

- b) The Rūnanga Chair (or their delegate), in conjunction with the Tāwhaki Rūnanga Board Members, will review applications and be responsible for appointing the Rōpū, based on the requirements of the role.

2.4. Additional membership:

- a) One of the Tāwhaki Rūnanga Board Members will act as a Facilitator for the Rōpū hui.
- b) The CEO and other kaimahi may attend the hui, as support for the Rōpū.
- c) Further experts whether whānau or consultants, may be invited to attend hui as required to support specific kōrero/ kaupapa.

3. FREQUENCY/ HOURS OF HUI

- 3.1. The role of the Rōpū is deemed to be part-time.
- 3.2. Generally, hui will be held every second month. However, additional hui may be required, or conversely, a regularly scheduled hui may no longer be required. Decisions on frequency and timing will be made by the Tāwhaki CEO in consultation with the Rōpū.
- 3.3. Apologies for absence at a hui are to be provided to the Secretariat in advance of the hui and recorded in the minutes.

4. SECRETARIAT

Tāwhaki will provide secretariat support for the Rōpū, including:

- a) Developing the agenda for hui
- b) Circulating the agenda and supporting papers to members of the Rōpū before the hui
- c) Keeping and administrating hui minutes
- d) Distributing hui minutes to Rōpū members
- e) Facilitating remuneration

5. REMUNERATION

- 5.1. Rōpū members will receive \$560 + GST per day for hui or pro-rata depending on the time involved in hui preparation and attendance.
 - a) One day equates to 8-hours.
- 5.2. Members are responsible for paying all Inland Revenue payments or other taxes with respect to remuneration and disbursements.

6. TRAVEL

- 6.1. Travel outside of the takiwā for Tāwhaki business will be organised by the Secretariat.
- 6.2. Tāwhaki will pay for all ordinary, necessary, and reasonable expenses required for a Rōpū member to undertake approved travel, outside of the takiwā for Tāwhaki business and hui.

6.3. Examples of items that are not typically covered for travel expenses are:

- a) Excess baggage fees
- b) Passports
- c) Alcohol and minibars

7. EXPENSES

7.1. Should expenses be incurred as a direct result of Rōpū mahi, Tāwhaki will reimburse these costs if they are necessary and reasonable.

7.2. The following items listed are the most common allowable expenses that Tāwhaki can reimburse:

- a) Parking fees (excluding fines)
- b) Taxi fare
- c) Mileage for extended travel outside of the city e.g., from Christchurch City to Kaitorete

7.3. The mileage reimbursement rates are as specified by Inland Revenue Dept

7.4. Seek advice before incurring the cost if you are unsure.

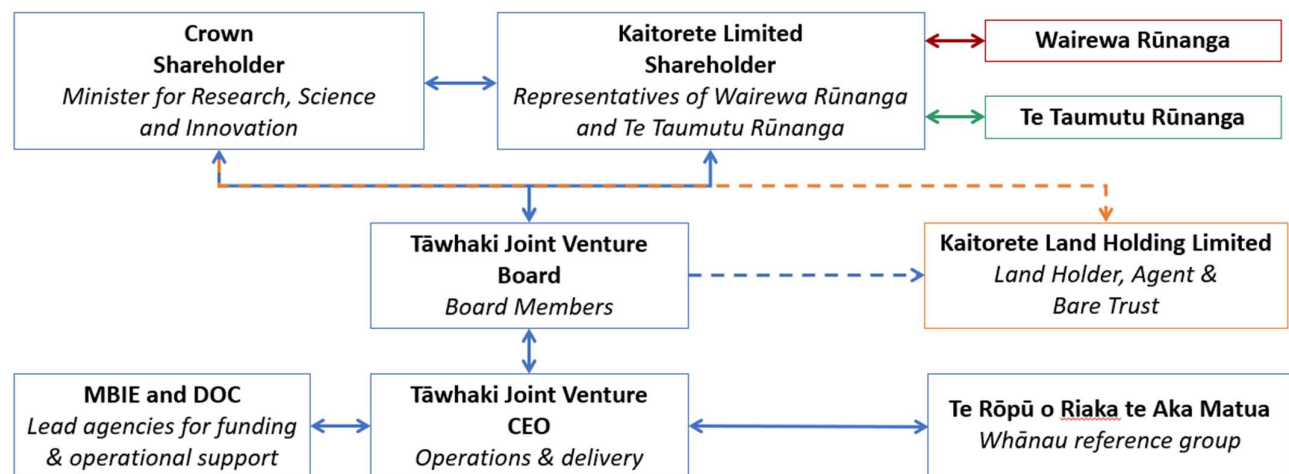
8. DURATION OF THIS TERMS OF REFERENCE

8.1. This Terms of Reference covers the period March 2023 through to 30 June 2024 and will be reviewed annually or as required by the Tāwhaki Board.

9. CONFIDENTIALITY

9.1. Members of the Rōpū, including those supporting the Rōpū, who receive information relating to Tāwhaki will maintain the confidentiality of that information, where required.

10. DIAGRAM OF RŌPŪ RELATIONSHIP WITHIN TĀWHAKI WIDE STRUCTURE



About Tāwhaki

Formally established on the 26th of May 2021, Tāwhaki is a joint venture partnership between Kaitorete Limited (representing Te Taumutu Rūnunga and Wairewa Rūnunga) and the Crown to create enduring opportunities and achieve positive outcomes for the whenua (land) at Kaitorete, for whānau, hāpu, and the wider community.

Tāwhaki has a dual kaupapa (purpose) to:

1. Heal and rejuvenate the unique whenua at Kaitorete

– an area of significant cultural importance renowned for its mahinga kai, taonga species and history. Home to numerous threatened and locally endemic plant, invertebrate, birds and reptile species, with internationally-recognised ecological value.

2. Advance Aotearoa’s aerospace industry

– through the development of aerospace activities and R&D facilities on the whenua, there is the potential to generate significant and regenerative economic outcomes through job creation, capital investment and ancillary opportunities.

We believe that the dual kaupapa are connected and complementary. They bring together mātauranga Māori and innovative technology to enable us to understand our world and navigate the future together.

Ngā Uara – Our Values

Our uara underpin and are reflected in all that we do, along with the tikanga and kawa of Te Taumutu Rūnunga and Wairewa Rūnunga.

Auahatanga	Tautiākina	Whakapapa	Manawanui
<p>Whai atu te ara hei te tihi o te karu me te ara tukutuku pūngāwerewere</p> <p>Seek out the pathway across the wave tops and climb the strong vine to reach your goals We will be creative, innovative, and use entrepreneurial behaviours to realise potential.</p>	<p>Te kānohi o Tāwhaki</p> <p>Like Tāwhaki’s eyes that became the rātā flower, ensure the beauty of the taiao is cared for and flourishes</p>	<p>Mā te tuakana te teina e tōtika, mā te teina te tuakana e tōtika</p> <p>Through healthy relationships and respect for diversity of thought and action the right pathways will be chosen</p>	<p>Kia mau ki te aka matua; kei mau ki te aka tāepa</p> <p>Seek out and hold firm to the path that is true, strong and leads you to your goal</p>
<p>We will approach the journey with a solutions-based attitude and will draw inspiration from the early feats of Maui and Tāwhaki that included travel across vast spaces and the gathering of celestial knowledge.</p>	<p>We will actively tend, guard, and take care of Kaitorete – our environment, our people and our relationships. We will approach opportunities with holistic stewardship that protects and provides choices for future generations.</p>	<p>We value and respect relationships – relationships between people and relationships of the natural world order. We support, care and uplift others and demonstrate this through respect, aroha, open communication, being inclusive and thinking holistically in our approach.</p>	<p>We will be enduring, courageous, focused on the kaupapa and true to ourselves and our communities. We are committed to being steadfast in our approach to enacting positive action and outcomes. We will bring solution-based thinking, be open to new knowledge and act decisively with transparency, integrity and take responsibility for our decisions.</p>

Document History and Version Control					
Title	Terms of Reference – Te Rōpū o Riaka te Aka Matua				
Category	External Group		Type	Terms of Reference	
Version number	V1.0	Date approved	28 Mar 2023	Next review date	Annually
Responsible	Chief Executive Officer (CEO)		Approved by	Tāwhaki Joint Venture Board (Board)	
History	V1.0 – New Terms of Reference March 2023				